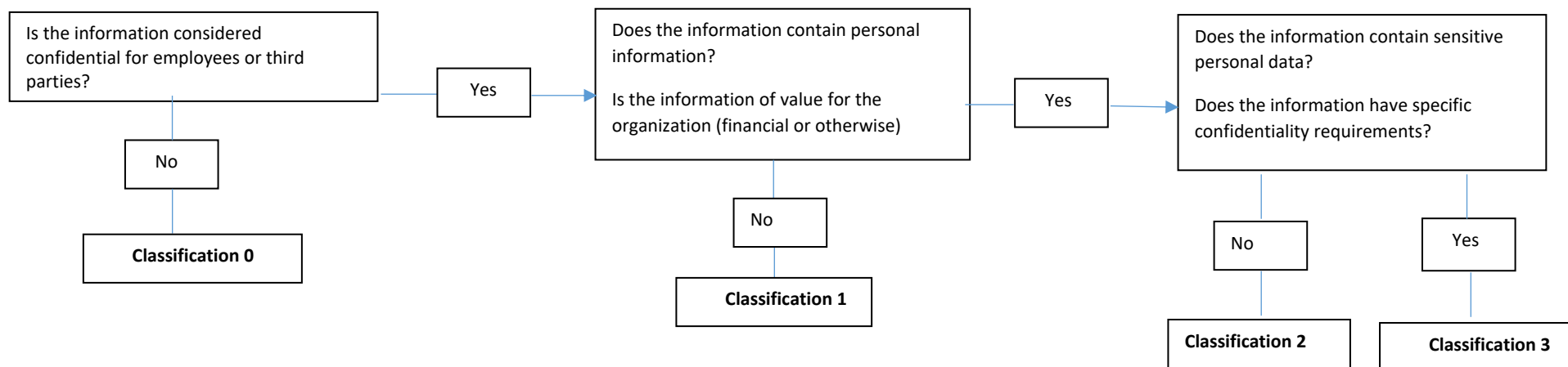


Confidentiality (C)



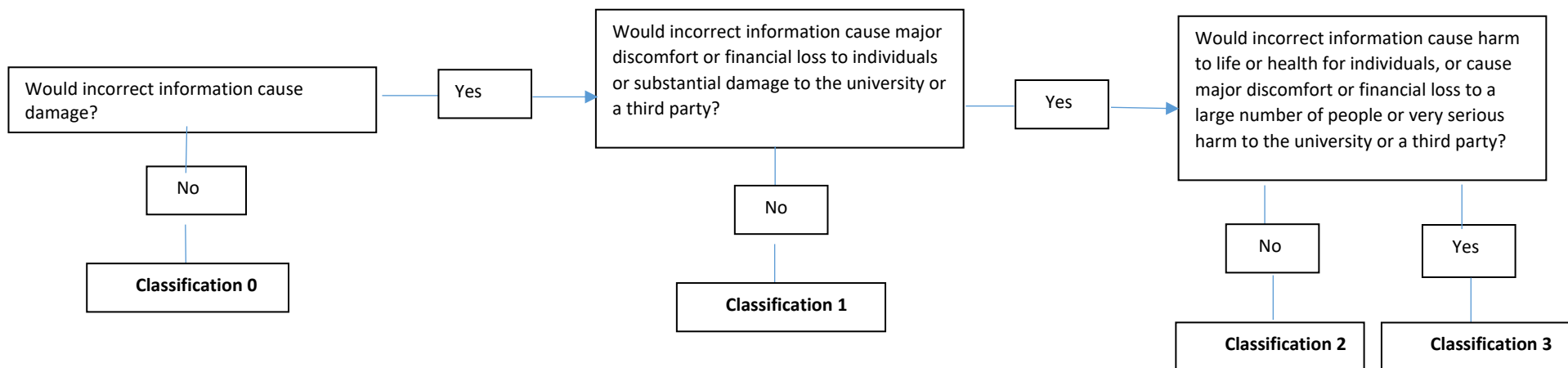
Information examples

- Classification 0** Public information published on the UU Web, official documents not subject to secrecy
- Classification 1** Internal information that does not contain personal data and not subject to secrecy, contracts / agreements
- Classification 2** Personal data (any data possible to link to a person), logs, user information / data, research data
- Classification 3** Sensitive personal information or information associated with protected identities, passwords, crypto keys, firewall rules, particularly sensitive research data

Possible consequences of shortcomings

- Classification 0** No consequences
- Classification 1** Could cause discomfort or limited harm / financial loss to individuals, the University or a third party.
- Classification 2** Could cause major discomfort or extensive injury / financial loss to individuals, the University or a third party.
- Classification 3** Could cause harm to life or health for individuals or cause major discomfort/injury or financial loss to a large number of people, or very serious harm to the University or a third party.

Integrity (I)



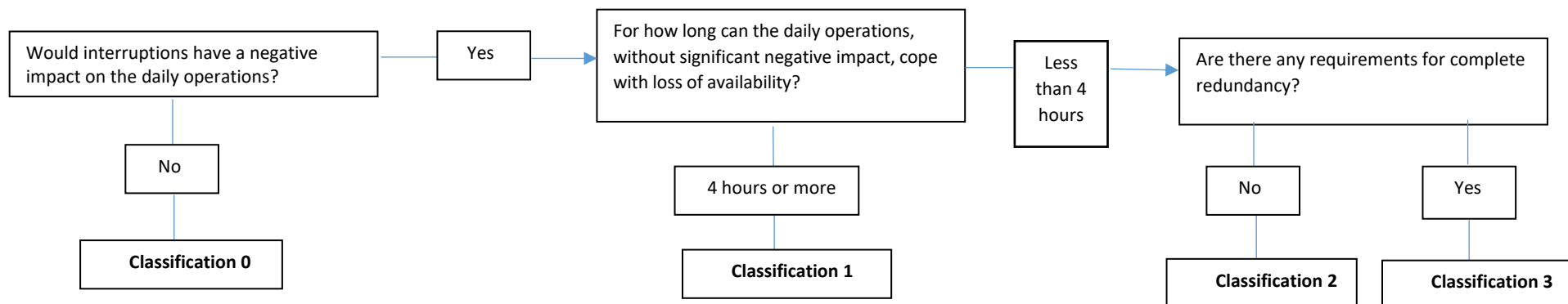
Information examples

- Classification 0** Test data that does not need to be restored
- Classification 1** General information for external users, internal / external communication via e-mail
- Classification 2** Research materials, Articles, Student information basic and postgraduate education, staff matters, logs
- Classification 3** Clinical data / patient's data, passwords, firewall rules, particularly sensitive research data

Possible consequences of shortcomings

- Classification 0** No consequences
- Classification 1** Could cause discomfort or limited harm / financial loss to individuals, the University or a third party.
- Classification 2** Could cause major discomfort or extensive injury / financial loss to individuals, the University or a third party.
- Classification 3** Could cause harm to life or health for individuals or cause major discomfort/injury or financial loss to a large number of people, or very serious harm to the University or a third party.

Availability (A)



Information examples

Classification 0 -

Classification 1 Staff cases, financial data, payrolls, logs.

Classification 2 Authority register

Classification 3 Systems that affect life and health.

Possible consequences of shortcomings

Classification 0 No consequences

Classification 1 Could cause discomfort or limited harm / financial loss to individuals, the University or a third party.

Classification 2 Could cause major discomfort or extensive injury / financial loss to individuals, the University or a third party.

Classification 3 Could cause harm to life or health for individuals or cause major discomfort/injury or financial loss to a large number of people, or very serious harm to the University or a third party

Reference table for information classification - default values for different types of information

The following reference table contains standard values for a number of types of information that are common at the University. The specified CIA values are based on a more extensive material, compiling scores from a large number of departments and other activities. A specific information classification (assessment of CIA values) needs to be done in each unique context - the following assessments can be used as guidance along with the classification support presented above.

| Designation | CIA value | Comment |
|---|-----------|---|
| Personal data | 221 | All kinds of information that can be linked directly to a person, such as social security number, name, address, etc. Also, information that can be linked indirectly to a person is considered personal, such as IP number. |
| Sensitive personal data | 321 | According to GDPR: <ul style="list-style-type: none"> • racial or ethnic origin • political opinions • religious or philosophical beliefs • membership of a trade union • health • a person's sex life or sexual orientation • genetic data • biometric data that uniquely identifies a person. |
| Clinical data / patient's data | 331 | |
| Anonymous personal data (including clinical data / patient's data) | 121 | The data should be anonymized in a way that makes it impossible to derive these to a unique person. The Key must not be found anywhere in the world! |
| Pseudonymized personal data (clinical data / patient's data) | 121 | Secure key management is an absolute requirement |
| Pseudonymization key | 331 | |
| Staff matters | 221 | Example: Vacation, employment contract |
| Confidential staff matters | 321 | Example: Medical certificate |

| | | |
|--|-----|---|
| Public information in the authority register | 022 | |
| Confidential information in the authority register | 322 | |
| Research material | 222 | |
| Research material containing personal information | 231 | |
| Human/non-human genetics data | 322 | |
| Student information | 221 | |
| Course evaluations | 221 | |
| Teaching materials | 222 | |
| Disciplinary matters | 322 | |
| Visitor information | 211 | Information about visitors at UU |
| Economic data | 221 | |
| Blueprints (public) | 011 | |
| Blueprints (confidential) | 322 | |
| Backups | | Depending on the classification related to the actual information |
| Logs | | Depending on the classification related to the actual information |

Classification values related to Central systems

A system rating value (CIA value) is based on the highest rating value for each aspect (Confidentiality, Integrity, and Availability) found among the amount of information the system manages. In the work related to “Kravanalys”, the system is checked to fulfill the security level that corresponds to the system's classification value. After dialogues with different parts of the business, information classifications and requirements for central systems have been implemented, within the framework of the University's central administration organization - see <https://mp.uu.se/web/info/vart-uu/e-forvaltning> .

Below is the list of CIA values for a number of central systems that have a clear link to the departments activities.

| System | Informationsklassning (KRT) | e-område |
|-------------------------------------|--------------------------------|--------------------------|
| AKKA | 332 | Katalog och integration |
| Nya Raintance, RD2018 | 321 | Ekonomi och inköp |
| Electronic Laboratory Notation, ELN | 221 | Forskningsadministration |
| Doktoranddatabasen, DDB | 221 | Forskningsadministration |
| Primula | 321 | HR |
| KLARA | 221 | LOSÄK |
| Studentportalen | 322 | Lärande och utbildning |

| | | |
|------------------|-----|------------------------------|
| Blackboard learn | 322 | Lärande och utbildning |
| VFU-portalen | 311 | Lärande och utbildning |
| Adobe Connect | 212 | Lärande och utbildning |
| Uppdok | 322 | Studieadministration |
| W3D3 | 322 | Ärende och dokumenthantering |
| E-arkiv | 322 | Ärende och dokumenthantering |