



**FORTE!**

Swedish Research Council for  
Health, Working Life and Welfare

# The Swedish Research Council for Health, Working life and Welfare

Forskningsrådet för hälsa, arbetsliv och välfärd

# What is Forte?

- Forte is one of Sweden's four public research councils
- Forte funds research to support people's health, working life and welfare
- We are a government authority under the Swedish ministry of Health and Social Affairs
- Our vision is a society with good health, sustainable working life and high welfare
- Forte is led by a board with full authority





# Our mission

- Funding of basic, needs-driven and interdisciplinary research
- Analysis and evaluation of research and research needs
- Communication, dialogue and collaboration within Forte's areas
- Promoting the dissemination and implementation of research
- Encouraging international research collaboration



# Main fields of research

## Health

- Research for public and individual health
- Prevalence of diseases and risk factors
- Prevention
- Rehabilitation and nursing
- Health care processes and systems

## Working life

- Labour market
- Organisation and management
- Physical and psychosocial working environment
- Societal changes, such as immigration, urbanisation, and technological development

## Welfare

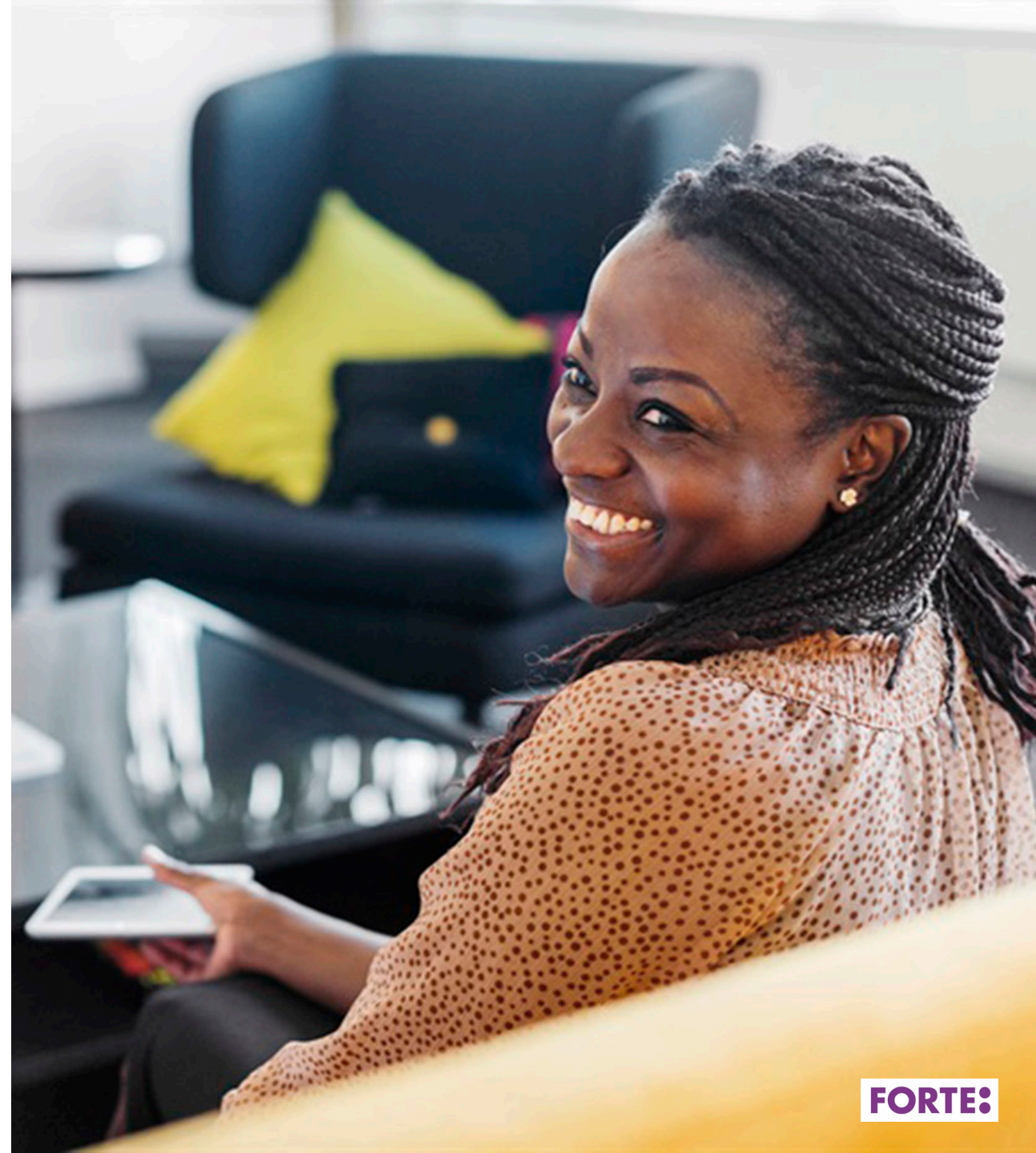
- Social policy and social security
- Regulation and institutions
- Social care and social work
- Ethnical relations
- Living conditions of children and youth

# Coordination for increased impact and public benefit

- Children and young people
- Elderly
- International migration and ethnic relations (IMER)
- Disability
- Social research on alcohol and narcotics

## National research programme: **Working life**

- Will increase knowledge on...
  - how to prevent work-related ill-health
  - how to reduce risk of workers being injured and worn out
  - prerequisites for extended working life
- Will meet structural changes due to...
  - globalisation, digitisation, and automation
- Will address issues regarding...
  - migration flows
  - discrimination in working life





## National research programme: **Applied welfare**

- Client and practice-oriented research in the social services, including intervention research
- Will develop a system for identifying research needs, and fund research that meets these needs
- Aims to strengthen research on mental illness and the development of sick-leave
- Will fund PhD studies for expansion of knowledge in the social services



# National research programme: **Mental health**

Aim to

- increase the understanding of why mental illness increases in society
- develop methods and treatments

Will deal with

- children's and young people's mental health
- prevention and early interventions

*During the autumn of 2021 Forte will focus on gathering input from experts, authorities, civil organizations and other actors, to better understand existing societal challenges and knowledge gaps.*

*Open consultation deadline 30 November, only in Swedish*

*Read more on the web:*

*<https://forte.se/om-forte/sarskilda-satsningar/psykisk-halsa/>*



# FUNDING AND ASSESSMENT

# Forte's research funding in 2020

SEK **743** million was paid to research

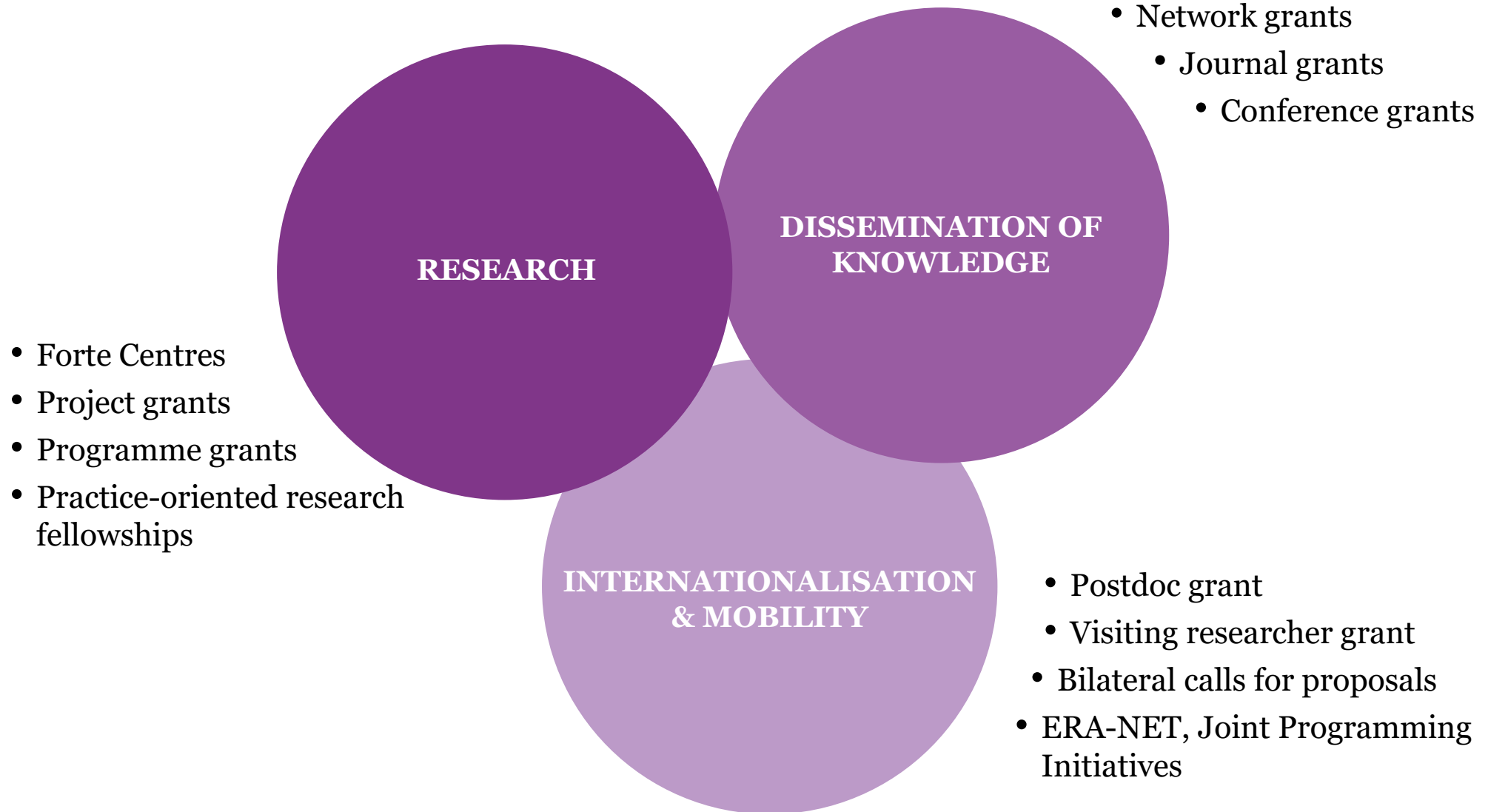
SEK **555** million was granted to new research

**11%** of received applications was granted

SEK **4,2** million was the average size of Project grants

**1 405** applications were received and reviewed

# Funding Instruments





# Different types of calls

## **Yearly calls that follow a recurrent cycle**

- Open for all research within Forte's areas of responsibility
- Permanent review panels

## **Thematic one-off calls**

- Open for research that address the questions identified in the call
- Temporary review panels

# Assessment

## Review panels

- Leading researchers representing our areas of responsibility and community representatives to ensure public interest and social relevance

## Criteria

- Review panels make their assessment based on both the scientific quality of the applications and their societal relevance, as well as feasibility
- Specific criteria depend on the current call

# SOME NEWS



# Changes from 2022

- Annual open call: One stage application
- Junior research grant: Will not be used as an instrument
- Postdoc: Yearly special call including
  - National postdoc
  - International incoming postdoc
  - International outgoing postdoc

# Annual open call for projects

Call opens

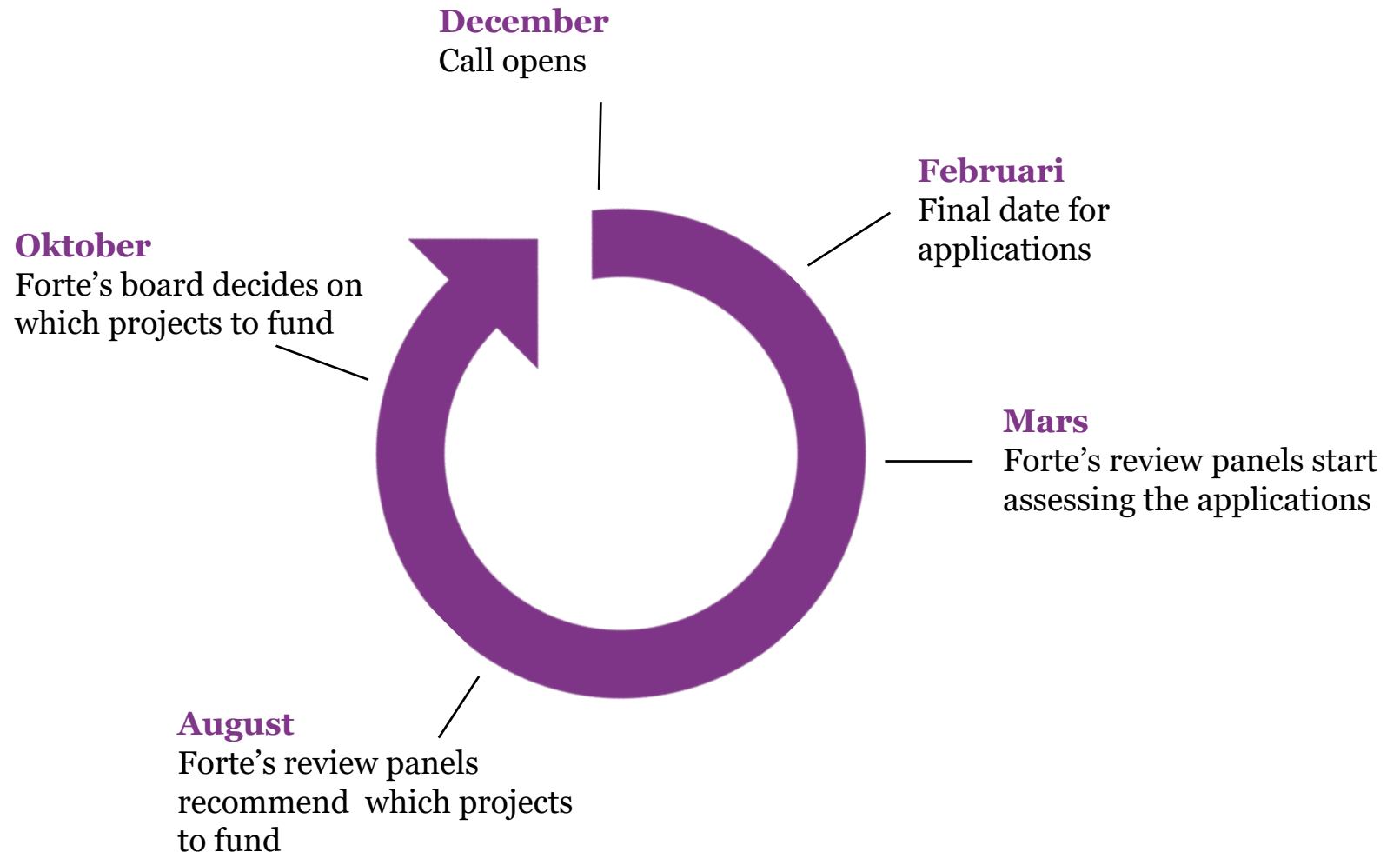
- 2 December 2021

Call closes

- 3 Februari 2022

Project start

- 1 januari 2023



# Eligibility – new criteria

		Can I apply ...			
		Annual call for projects?	Thematic calls for projects?	International collaborative calls for projects?	Other calls/other funding instruments?
If I am already funded by Forte ...	Project funded within the annual call	No	Yes	Yes	Yes
	Project funded within thematic calls	No	Yes	Yes	Yes
	Project funded within call for international collaboration	Yes	Yes	Yes	Yes
	Other call/other funding instrument	Yes	Yes	Yes	Yes

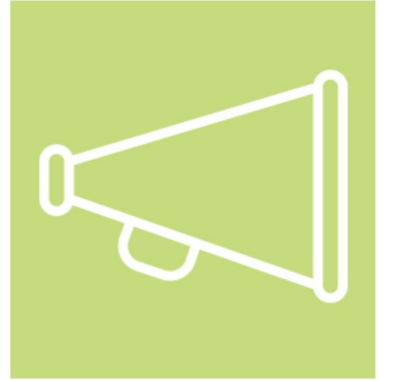


# OPEN AND FUTURE CALLS

# Multinational working groups within JPND

The EU Joint Programme – Neurodegenerative Disease Research (JPND) initiative has launched a call for expert working groups on the impact of Covid-19 on neurodegenerative disease research.

2nd of November 2021 – 14th of December 12:00pm



# Applied Welfare Research 2022

This call welcomes proposals for client and practice-oriented research within the social services sector. The focus of the call is based on eight prioritised areas, presented in the strategic agenda of the programme.

Project grants

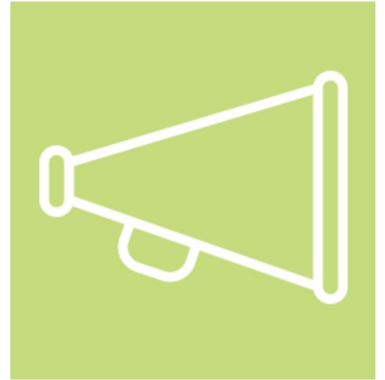
27th of October 10:00am – 14th of December 2:00pm



# Conference Grant 2022

Conference grants are financial support for conferences hosted by a Swedish institution of higher education or scientific/scholarly organisation. Applications for conference grants are assessed on an ongoing basis.

1st of October 2021 – 30th of September 2022





# Future calls

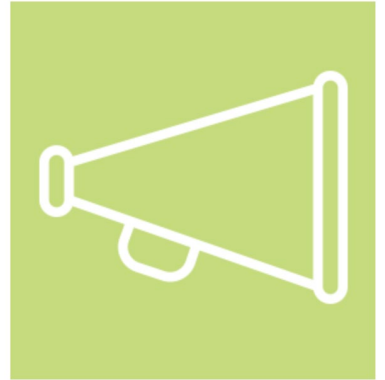
Preliminary dates

## **Project grants 2022**

Opens 2 Dec 2021   Closes 3 Feb 2022

## **Postdoc grants 2022**

Opens 9 Dec 2021   Closes 24 Feb 2022



**Stay updated**  
with our newsletter



Read more at **[forte.se/newsletter](https://forte.se/newsletter)**





# Thank you!

Inger Jonsson  
[Inger.jonsson@forte.se](mailto:Inger.jonsson@forte.se)