
KLARA BARCODE

Software- and hardware
2015-03-20

1 Document information

This document describes briefly how you handle downloads and settings regarding KLARA Barcode.

1.1 Requirement

Please observe that images are only to be regarded as guidelines and may vary depending on local client and chosen printers.

KLARA Barcode operates only on PC.

The examples in this document are when installed on Windows 7 and Zebra printer GK420t. This printer is the recommended one. Other printers may or may not work.

In order to install program, drivers and updates you need to have administrator's rights to your computer. Some settings regarding label lay-out and so on can be set by any user after the installation is done.

2 Barcode software

The software is downloaded to the local computer on this link:

<http://www.port.se/ws/Installationsfiler/BarcodePC/barcodePcAppSetup.msi>

Follow the instructions on the screen.

When you have downloaded the software properly a program file has been created ("*Nordic Port*"). In its sub-folder "*BarcodePcApp*", you should place an identification file (.ini) received by your administrator or Nordic Port.

The program is updated regularly but at most every trimester and will again require administrator's right in order to download the updates. You can, however, keep on working in the installed version.

3 Label printer

KLARA barcode is not custom-made to any specific printer, many different printers may work. However, we do not guarantee proper function nor do we support any chosen one. Nordic Port recommends the printer Zebra GK420t since this has been proven stable and is easy to operate.

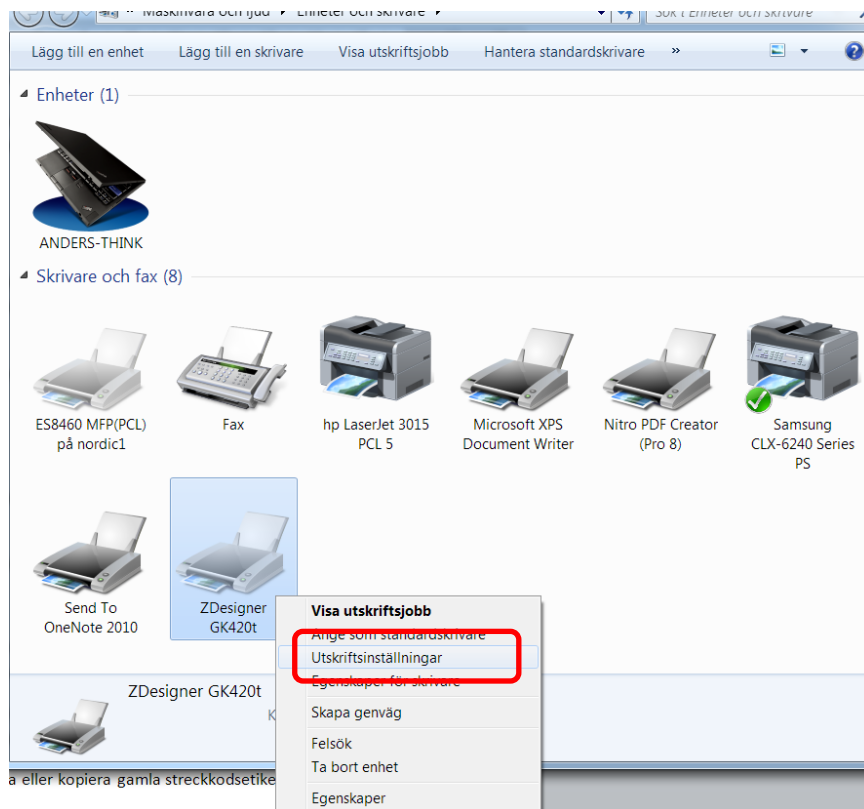
Download the driver at the manufacturer's homepage:

<http://www.zebra.com/content/zebra/us/en/support-downloads.html>

Follow the instructions on the screen.

When the download is completed, you need to change the default settings accordingly. The smallest recommended size of labels is 26mm*12mm.

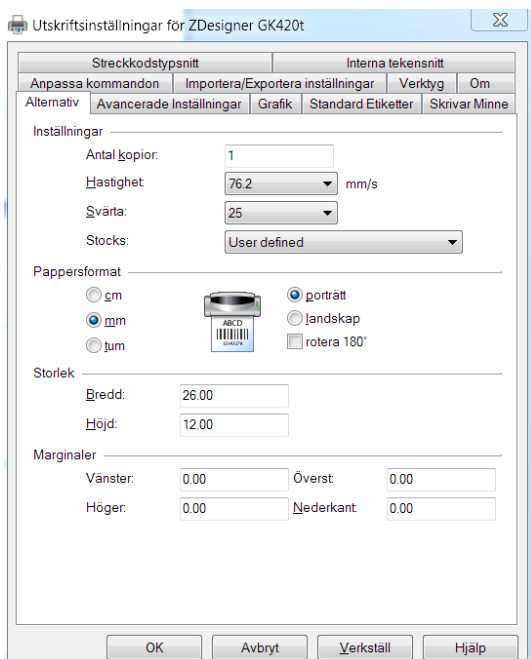
Choose "**Printer settings**".



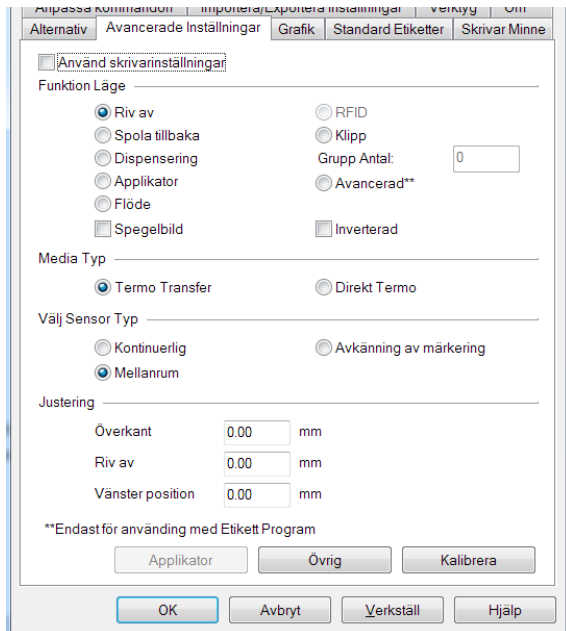
Choose the first tab, "**Alternative**". Here you should make the following changes:

- Speed: Change to low or medium to low.
Ink: Change to heavy.
Paper size: Change to mm. and make sure it is oriented as landscape.
Storlek: State paper size.

Confirm changes by clicking "**Apply**".



Choose the tab "**Advanced settings**". The settings you should apply is dependent on the type of printer and labels you use. Most probable you are using a label that requires a ribbon and with a gap between each label. Thermo Transfer and gap should than be applied.



If performed changes, click on "**Apply**".

Make sure that the printer is connected and turned on and "**Calibrate**".

Note! You may need to calibrate when changing ribbon or roll of labels.

Other settings can normally be as default.

4 Scanner

Installing a scanner is often done automatically when you connect it to the computer.