



UPPSALA
UNIVERSITET

Career & Leadership in academia

Rabbe Hedengren
Anna Westin

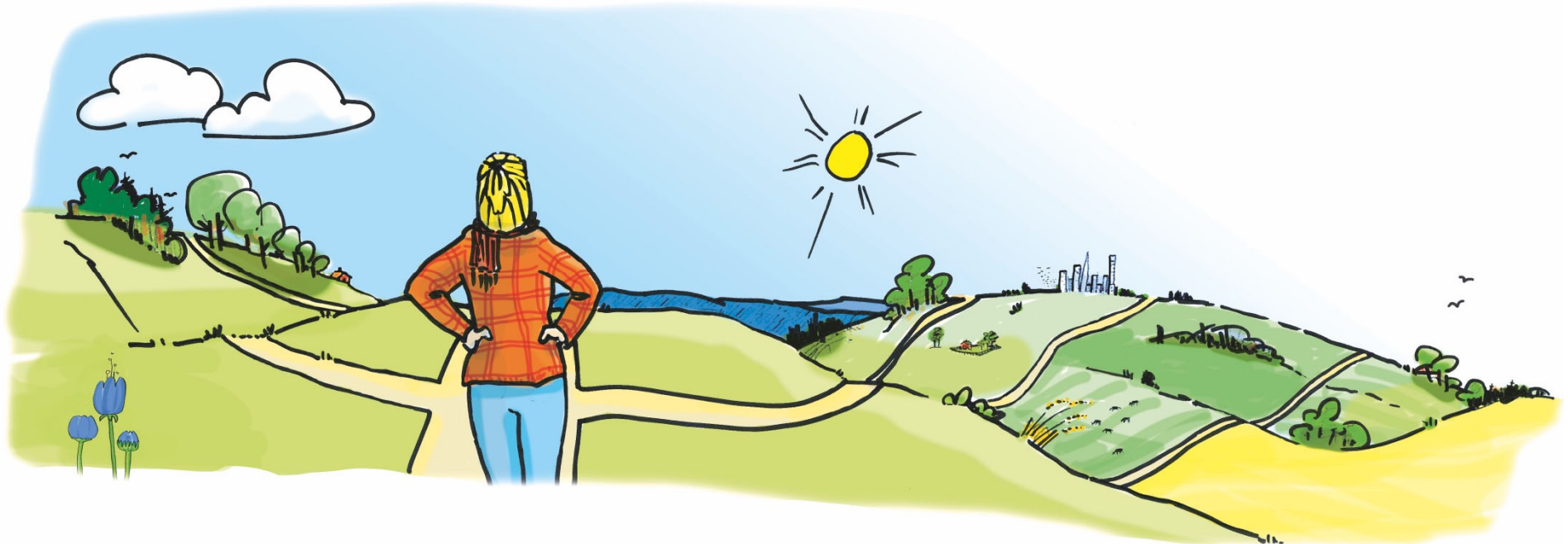




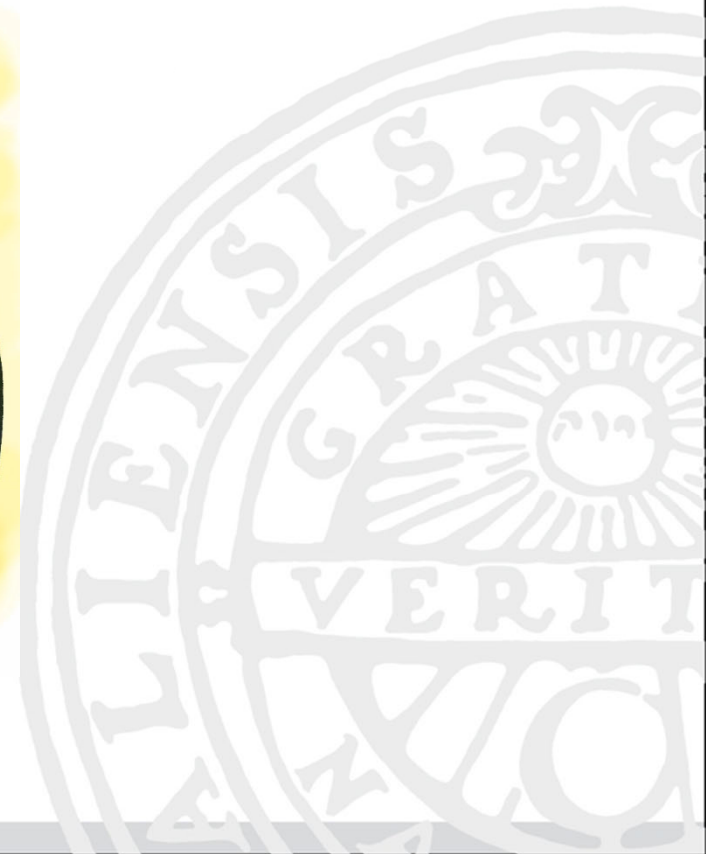
Coaching for a sustainable career

From post doc to professor

Within and outside academia



A reflective process





Career & Leadership

Courses

Ekonomispelet

Coaching for supervisors and leaders

On-line career program for doctoral students

Post doc on-line career program

Getting your message across

Förvaltningsrätt

Curious about leadership

Juridik i praktiken

Att leda och utvecklas i akademien

Avtal
– att avtalsreglera forskningsprojekt

How to build a support network for your next career steps

Research and Leadership

Imposter Syndrome

Academic productivity

U4 Leadership

Individual coaching

How to manage your time as a researcher

How to prepare and write a successful grant application

Seminars and workshops



Career for researchers, teachers and leaders

Here you will find an overview of support that may be helpful in your teaching and research career. The model below is based on the [Euraxess Reflex-model](#).



[Career development](#) – support to develop in your current role, planning a career, job search or promotion.



[Academic skills and development](#) – support for professional development in leadership, educational skills, academic writing, academic publishing, etc.



[Mobility](#) – support to stimulate international exchange and increase mobility between higher education institutions, language courses and the reception of foreign researchers.



[Networking](#) - exchange of experience and information in order to develop professional and social contacts



[Interaction and impact in society](#) – support for commercialisation and collaboration.



Euraxess - an European network which facilitates researcher mobility and promotes career development.





Where to find us

Contact us

karriarochledning@uadm.uu.se

Career portal

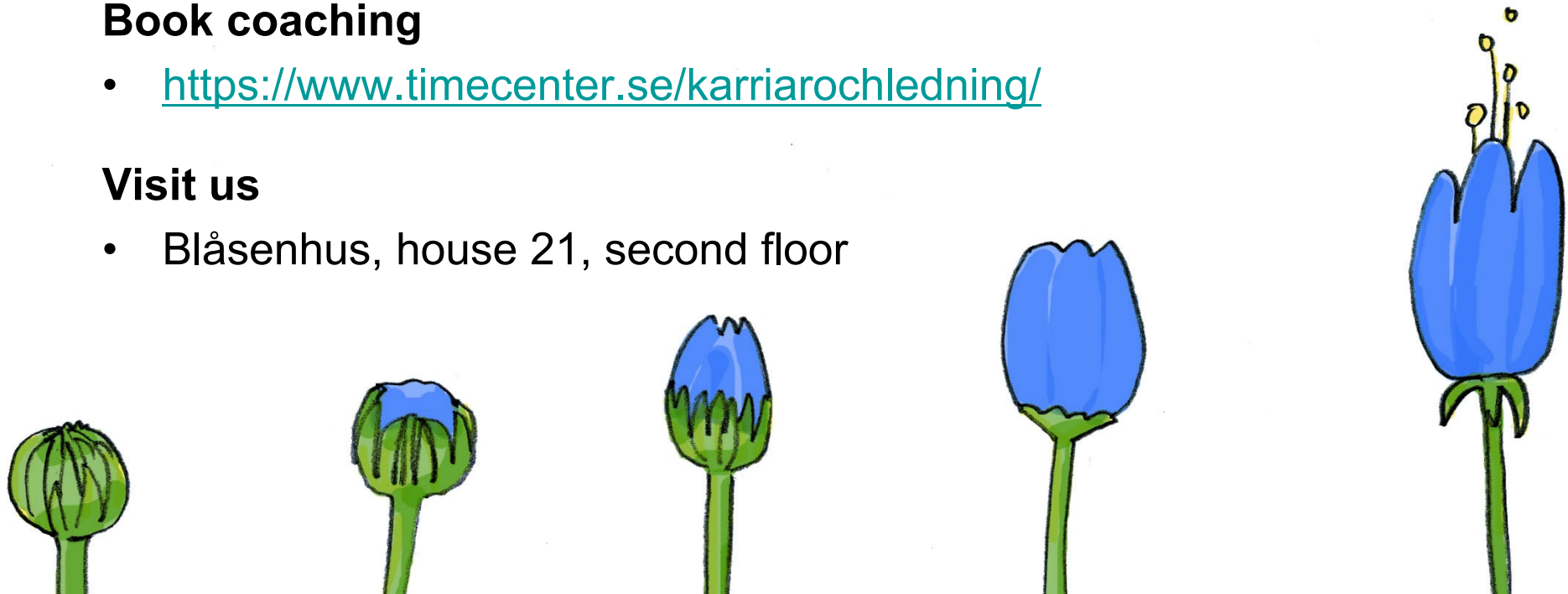
<https://mp.uu.se/sv/web/info/anstallning/akademisk-karriar>

Book coaching

- <https://www.timecenter.se/karriarochledning/>

Visit us

- Blåsenhus, house 21, second floor





UPPSALA
UNIVERSITET

Questions?



Thank you for listening and
welcome to contact us!