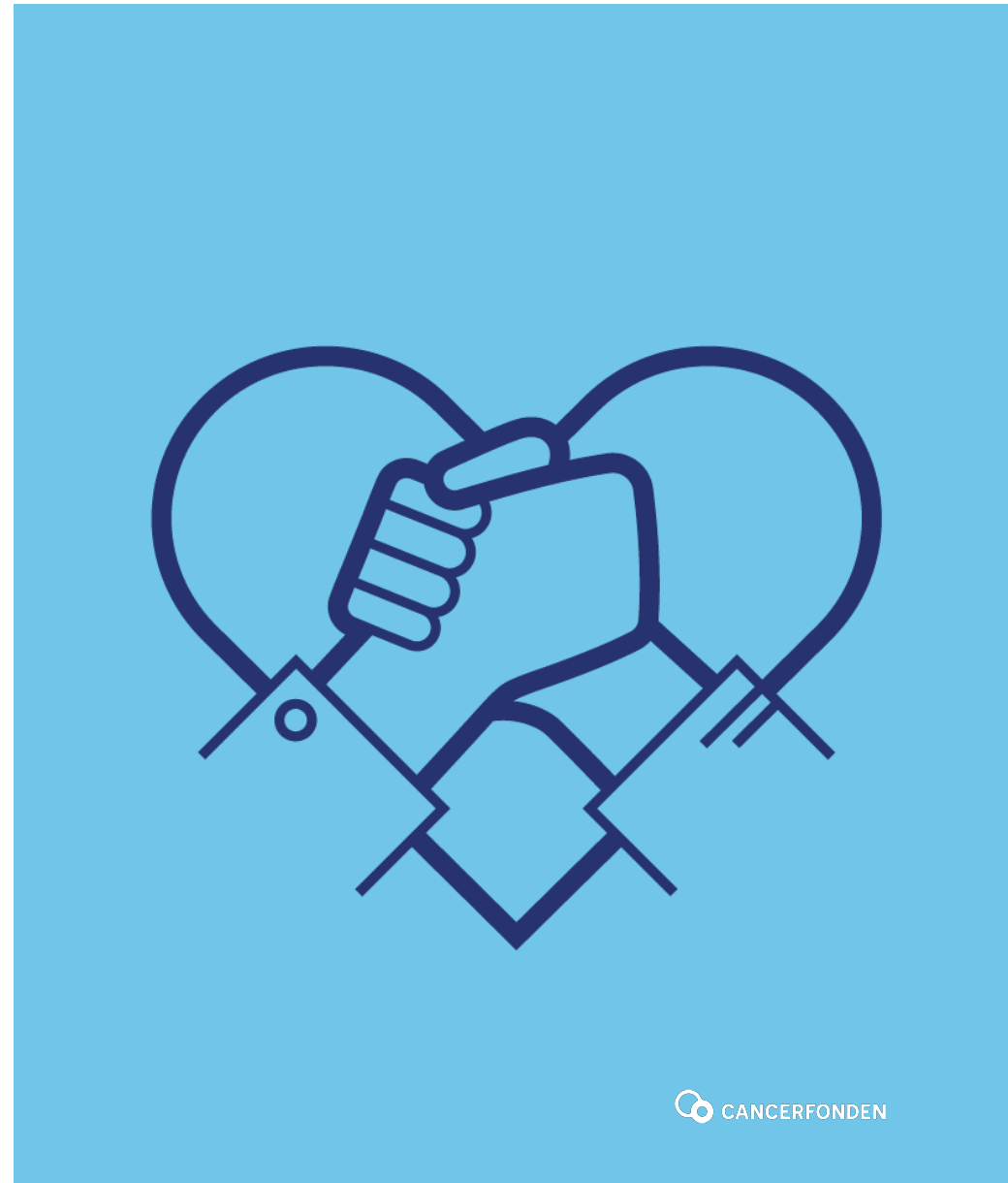


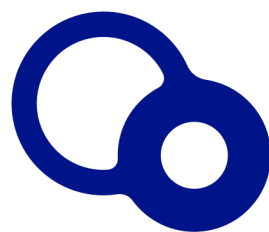
CANCERFONDEN

**An independent non-profit organisation
with no governmental funding**

Agenda

- How it started
- Our vision and mission
- “Cancer relevance” – who can apply?
- Research funding – strategies and work flow
- Project support – categories and priorities
- Some advice to new applicants

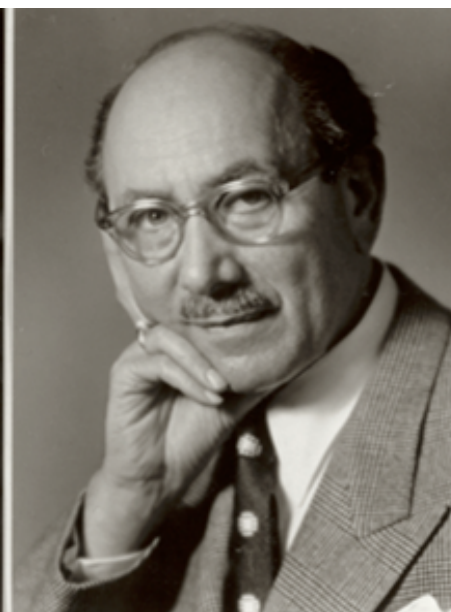




CANCERFONDEN

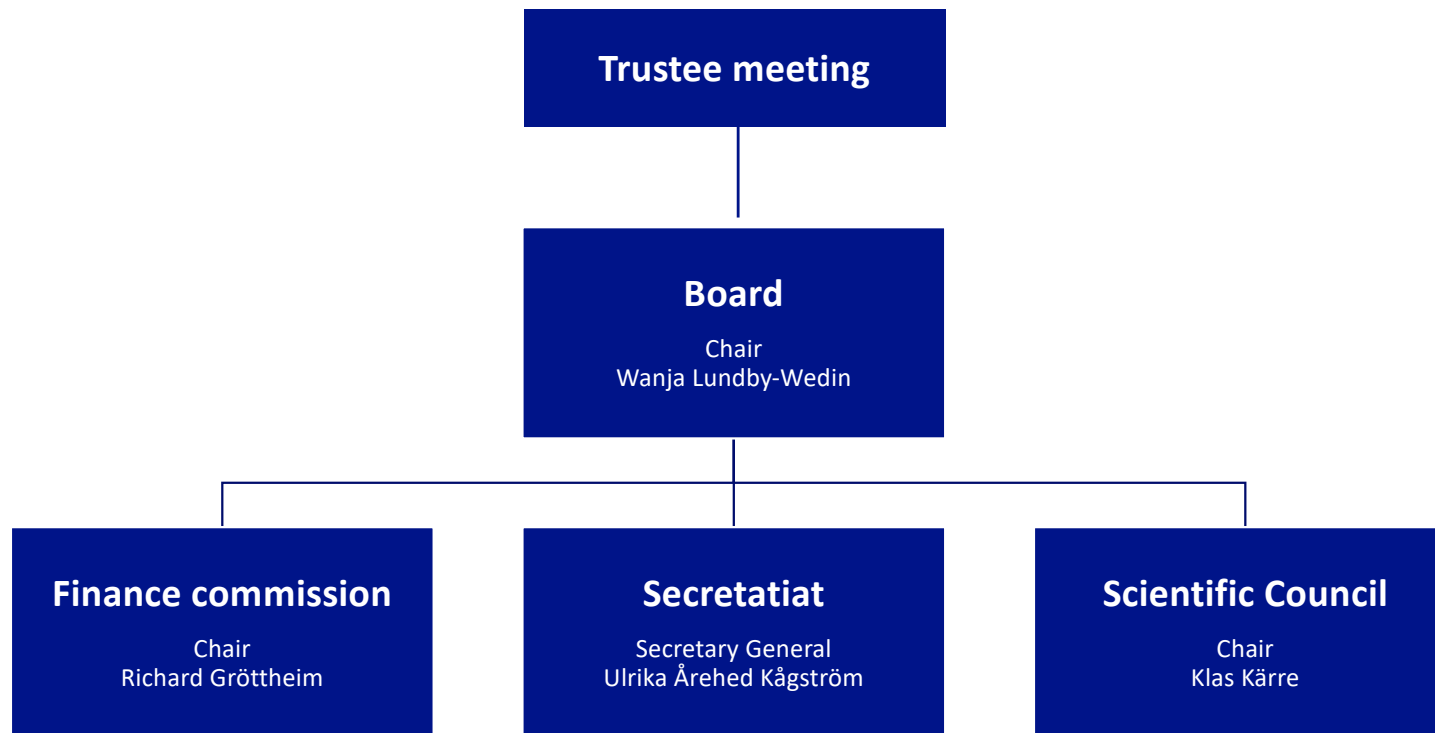


Ebba Andersson



Morri Nidén

Cancerfonden : the organisation



**Our vision
is to BEAT CANCER**

**Our mission
is to reduce cancer incidence,
to improve treatment and cure rates as well as survival time
and quality of life of those who cannot be cured**

More people are diagnosed with cancer every year...

... but survival rate has also doubled during this time!



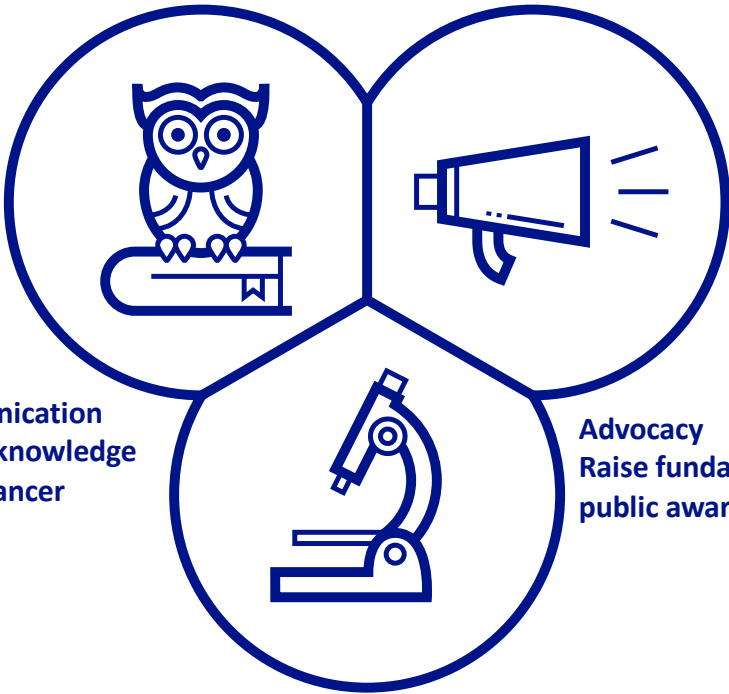
Number of new cancer cases at diagnosis 1970-2017
Källa: Socialstyrelsen



Our objectives



Communication
Spread knowledge
about cancer



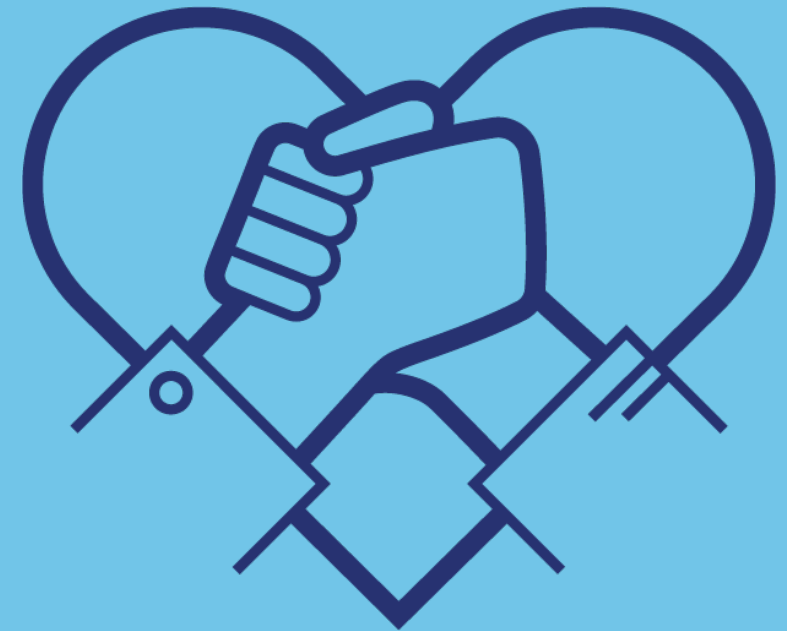
Advocacy
Raise fundamental questions and
public awareness to important issues

**Funding research in Sweden
of highest quality and rank**

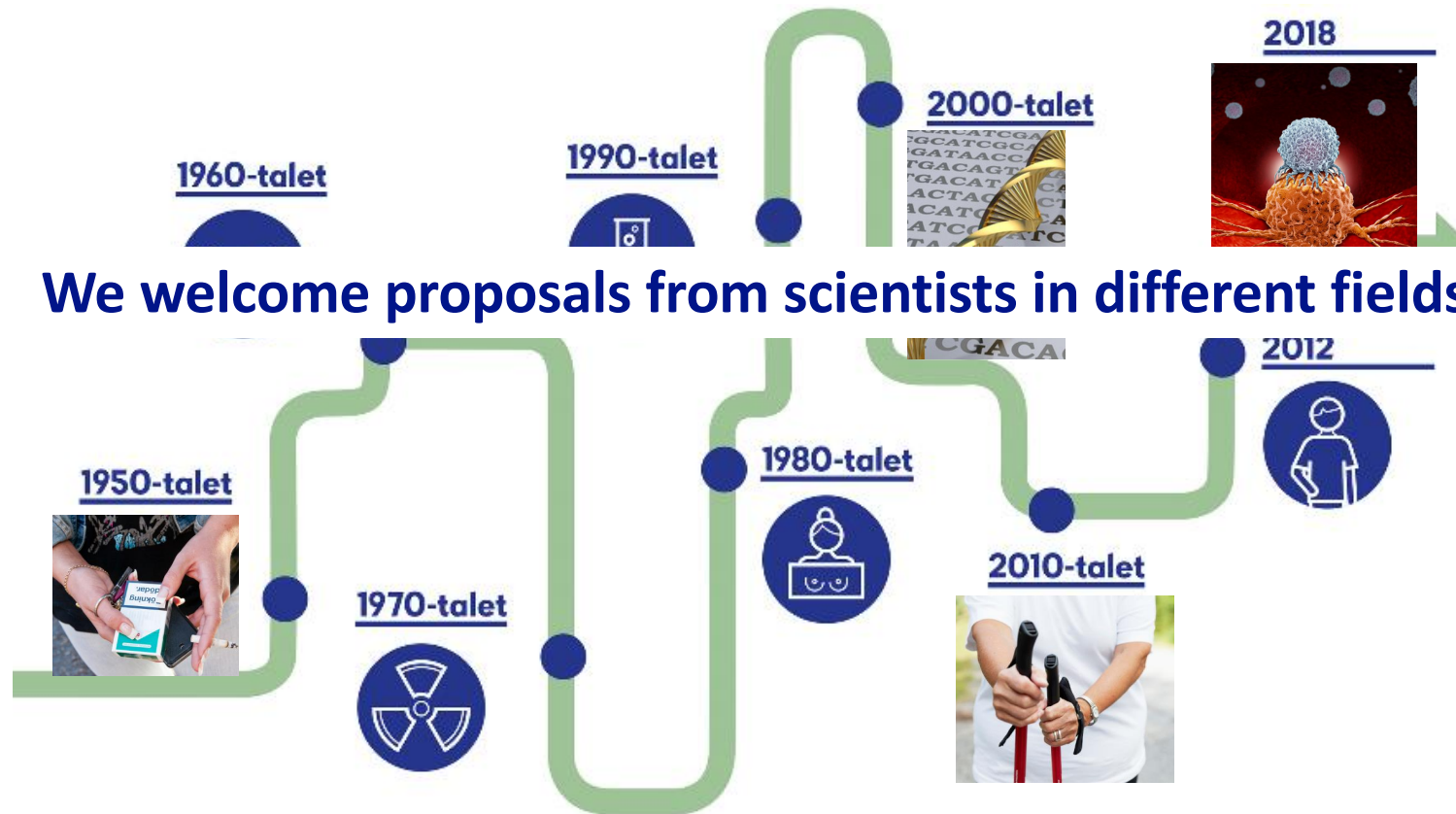


Agenda

- How it started
- Our vision and mission
- “Cancer relevance” – who can apply?
- Research funding – strategies and work flow
- Project support – categories and priorities
- Some advice to new applicants



Important to remember that scientific progress from 1950s until today has come in different areas



Research with relevance for cancer in all fields funded 1951-2020

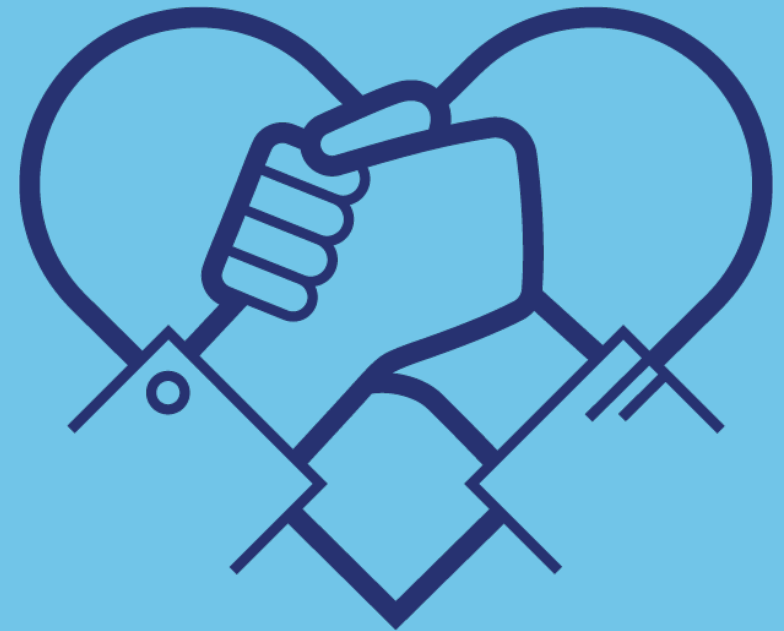


- **Since 1951-2020: 1 billion Euro awarded**
- **450 - 550 applications for research projects annually**
- **2020 : Decision of appr 80 million Euro funding for research projects and positions**
- **appr. 20-25% of total funding to academic cancer research (including government och non-profit organisations)**

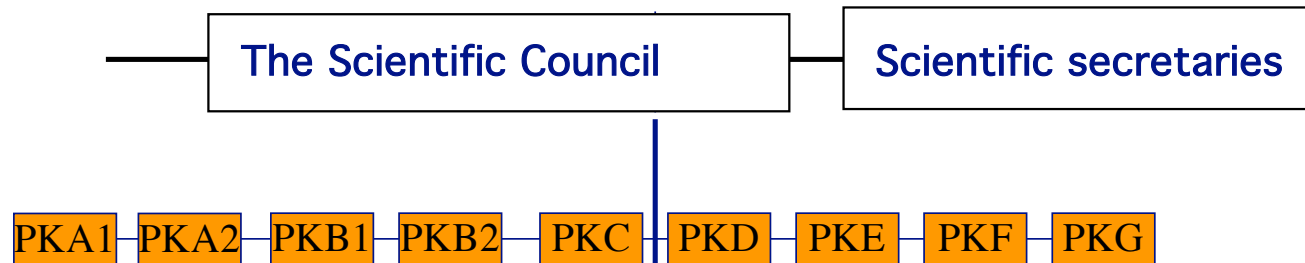
source: EY 2018

Agenda

- How it started
- Our vision and mission
- “Cancer relevance” – who can apply?
- Research funding – strategies and work flow
- Project support – categories and priorities
- Some advice to new applicants



The Scientific Council and its Study Sections ("Pk" = Prioriteringskommittéer)



The bottom-up strategy is built on clever ideas presented in applications

222/557 applications funded 2020

Approval rate overall 35-42%
(for new projects 23-29%)

The Scientific Council and its Study Sections ("Pk" = Prioriteringskommittéer)

Pk A 1

Cell biology, genetics, translational research

Pk A 2

Pathology, molecular diagnostics, translational research

Pk B 1

Gene regulation, biochemistry, metabolism, structural biology

Pk B 2

Model organisms, developmental biology, systems biology

Pk C

Immunology, microbiology, cell-transplantation

Pk D

Clinical and translational cancer research, pharmacology

Pk E

Radiotherapy, radiobiology, imaging diagnostics

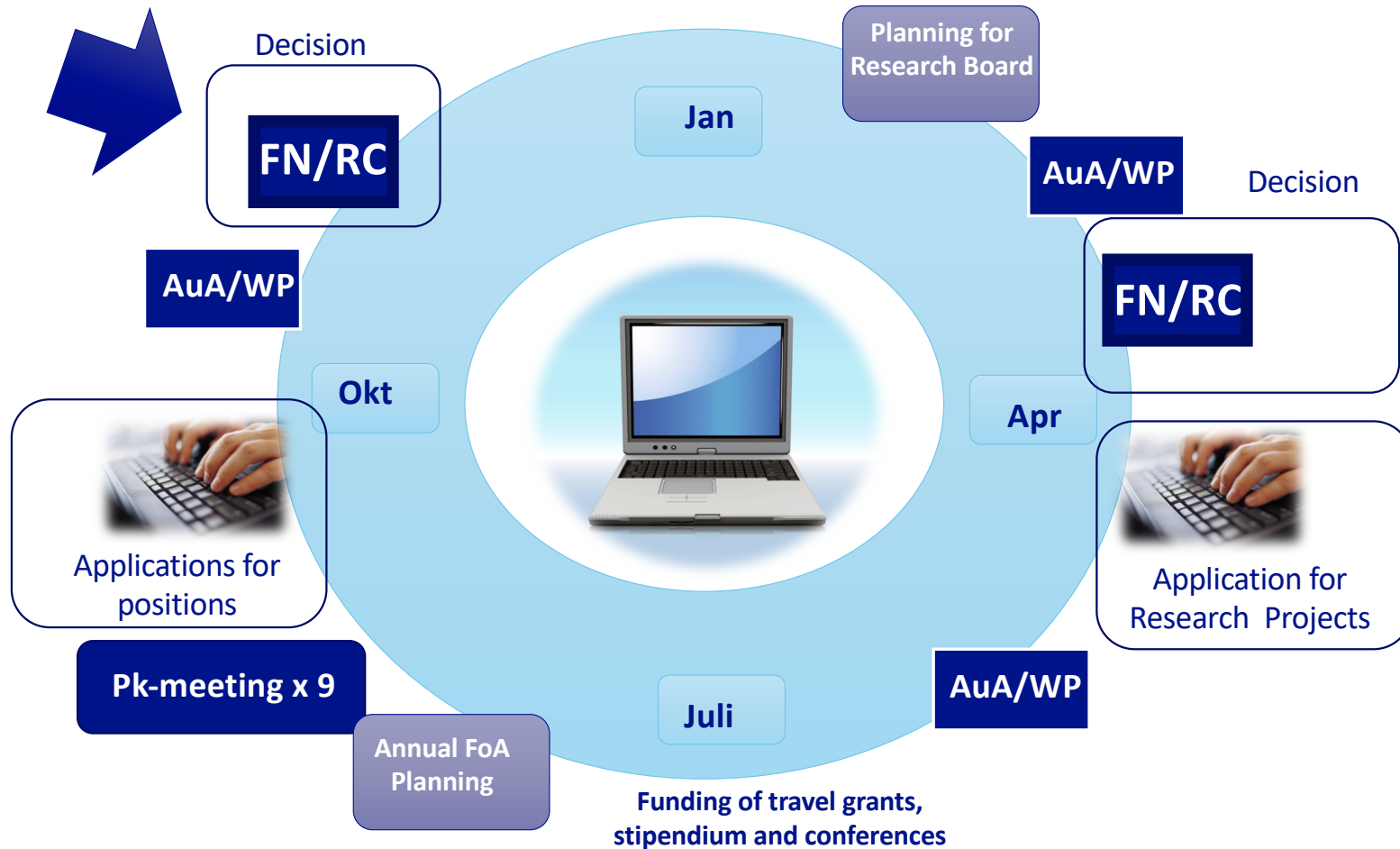
Pk F

Epidemiology, biostatistics, public health science

Pk G

Care science, palliative treatment, prevention, behavioral science

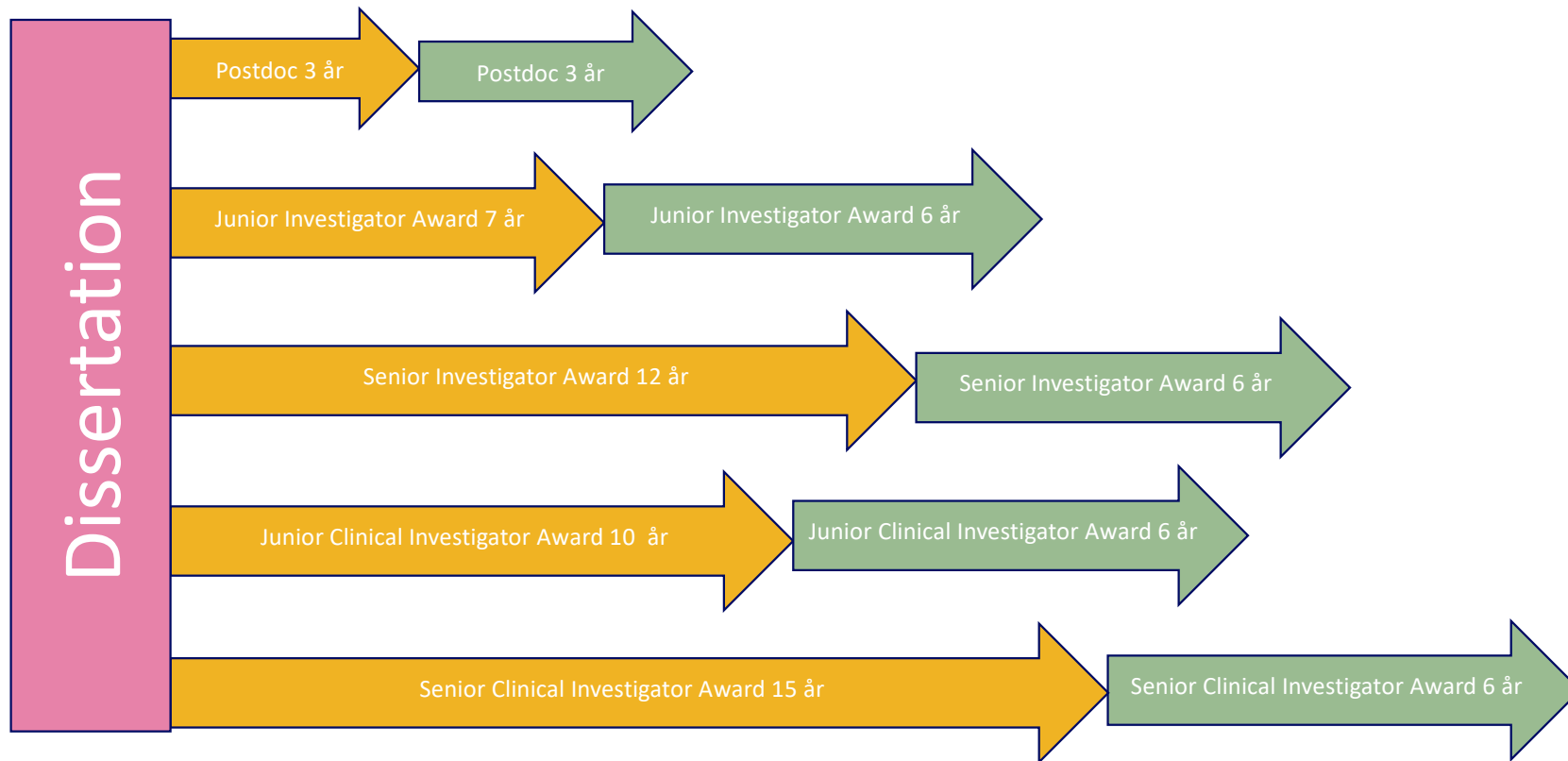
The annual cycle of research funding



Research funding – major categories

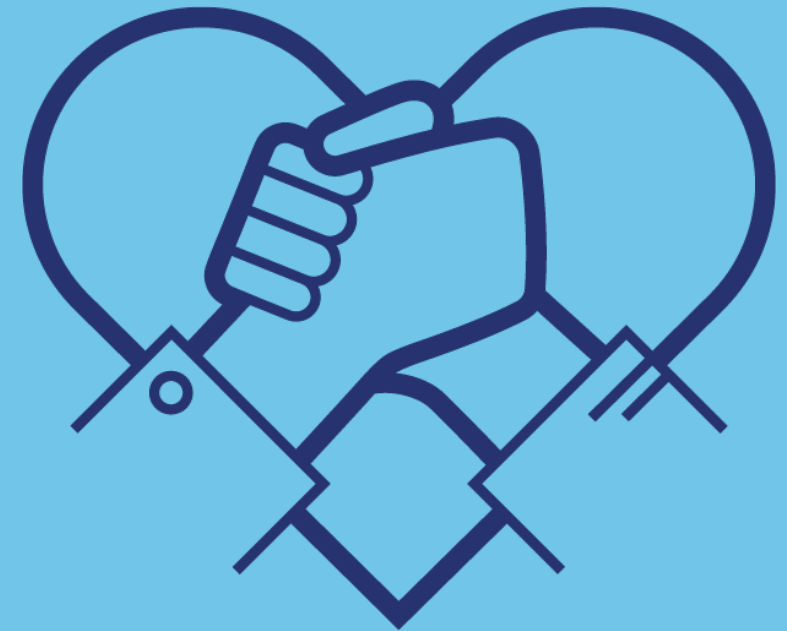
- **Project grant support > 85% of the total annual funding**
- **Research positions for junior and senior researchers**
- **Support for conferences, travel grants, research coordination and planning groups**

Positions at all career stages from dissertation are funded

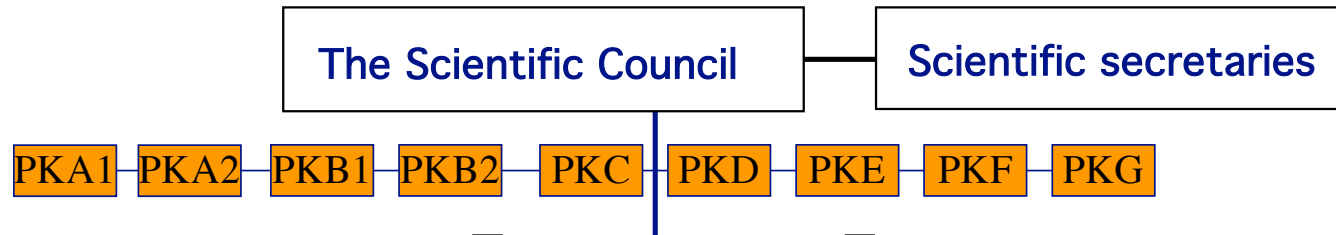


Agenda

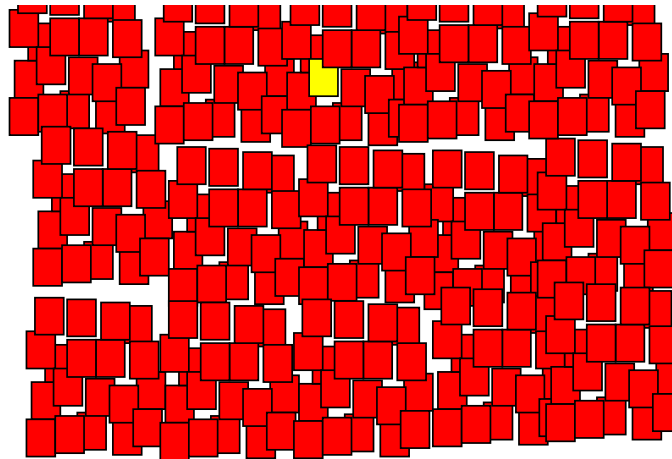
- How it started
- Our vision and mission
- “Cancer relevance” – who can apply?
- Research funding – strategies and work flow
- Project support – categories and priorities
- Some advice to new applicants



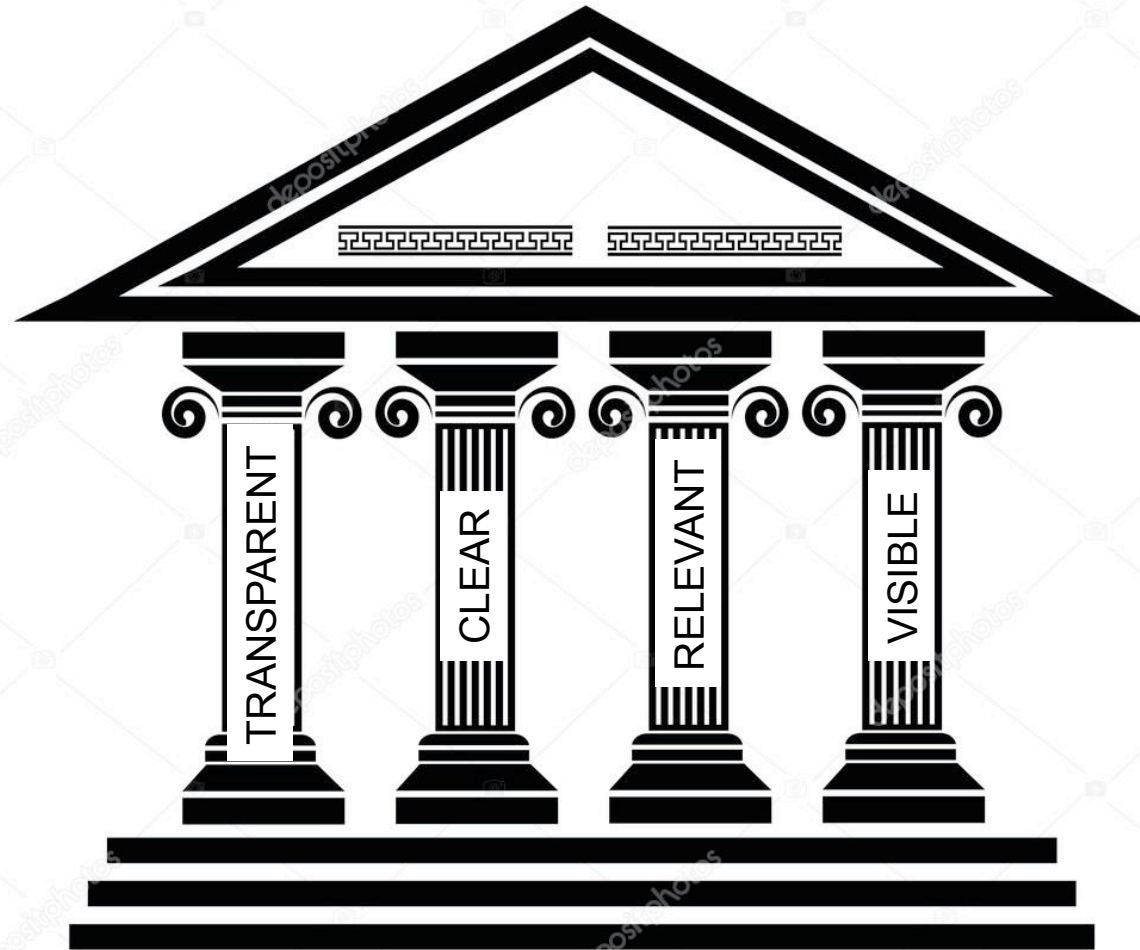
Your application is the committee's only instrument



Your application is one of many



The 4 important pillars holding up an excellent application



Common reasons for rejection of proposals

LACK OF TRANSPARENCY

Is the applicant really an independent PI?

What other grants are accessible to this young researcher?

Are there group members/collaborators to cover the competences that are required?

LACK OF CLARITY AND RELEVANCE

To many lines of research, lack of focus, difficult to read, too many details

A "fishing expedition" lacking a clear hypothesis

A relevant question, but irrelevant methods

The study population/cohort is too small and/or power analysis is missing

LACK OF VISIBILITY

Where is the independent research line in a large network of collaborators?

Questions to be answered in your application

- What do you want to do?
- Why is it important?
- What is known already?
- How will you do it?
- Previous experience?
- What material?
- Statistical power?
- Why apply from Cancerfonden?
- Why are you suited for the task?
- Who else will be involved?
- When?
- How much does it cost
- Why does it cost so much?
- What other sources do you have?
- Where does it lead?
- Risk and Gains?

Most importantly

Read the instructions and follow
them!

Some final advice

- **Begin well in advance!**
- **Ask for advice and comments** from your peers and senior colleagues !
- **Be prepared to adjust and improve**, not to get likes 😊.
- **A not unusual situation:** *”Can you please look at my application?
I must submit it tomorrow”*

Thank you and good luck!