



**FORTE!**

Swedish Research Council for  
Health, Working Life and Welfare

# The Swedish Research Council for Health, Working life and Welfare

Forskningsrådet för hälsa, arbetsliv och välfärd

# What is Forte?

- Forte is one of Sweden's four public research councils
- Forte funds research to support people's health, working life and welfare
- We are a government authority under the Swedish ministry of Health and Social Affairs
- Our vision is a society with good health, sustainable working life and high welfare
- Forte is led by a board with full authority



# Our mission

- Funding of basic, needs-driven and interdisciplinary research
- Analysis and evaluation of research and research needs
- Communication, dialogue and collaboration within Forte's areas
- Promoting the dissemination and implementation of research
- Encouraging international research collaboration



# Main fields of research

## Health

- Research for public and individual health
- Prevalence of diseases and risk factors
- Prevention
- Rehabilitation and nursing
- Health care processes and systems

## Working life

- Labour market
- Organisation and management
- Physical and psychosocial working environment
- Societal changes, such as immigration, urbanisation, and technological development

## Welfare

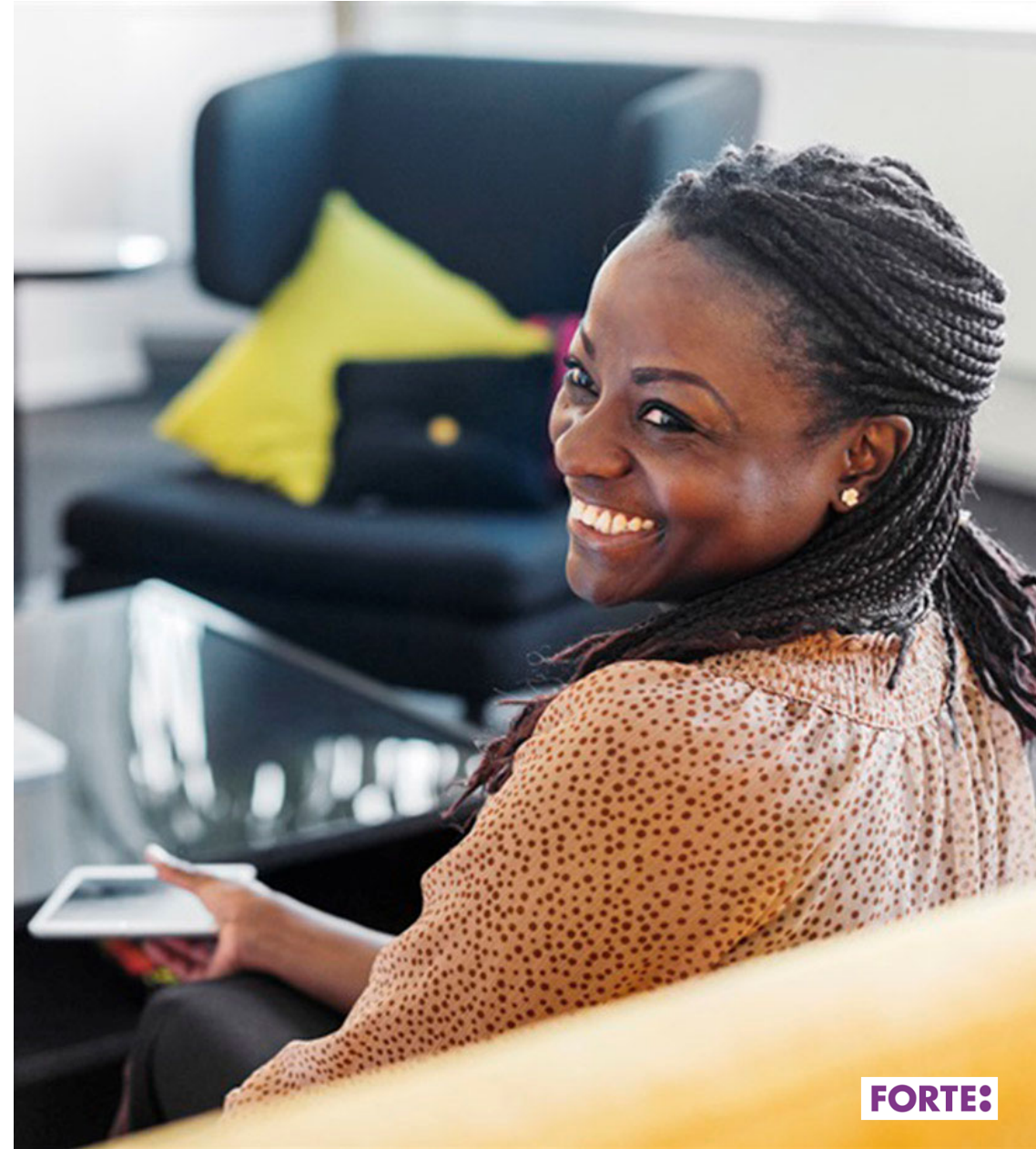
- Social policy and social security
- Regulation and institutions
- Social care and social work
- Ethnical relations
- Living conditions of children and youth

# Coordination for increased impact and public benefit

- Children and young people
- Elderly
- International migration and ethnic relations (IMER)
- Disability
- Social research on alcohol and narcotics

National research programme:  
**Working life**

- Will increase knowledge on...
  - how to prevent work-related ill-health
  - how to reduce risk of workers being injured and worn out
  - prerequisites for extended working life
- Will meet structural changes due to...
  - globalisation, digitisation, and automation
- Will address issues regarding...
  - migration flows
  - discrimination in working life



National research programme:  
**Applied welfare**

- Client and practice-oriented research in the social services, including intervention research
- Will develop a system for identifying research needs, and fund research that meets these needs
- Aims to strengthen research on mental illness and the development of sick-leave
- Will fund PhD studies for expansion of knowledge in the social services



# FUNDING AND ASSESSMENT



# Forte's research funding in 2019

SEK **685** million was paid to research

SEK **950** million was granted to new research

**12,2%** of received applications was granted

Highest grant rate since 2014

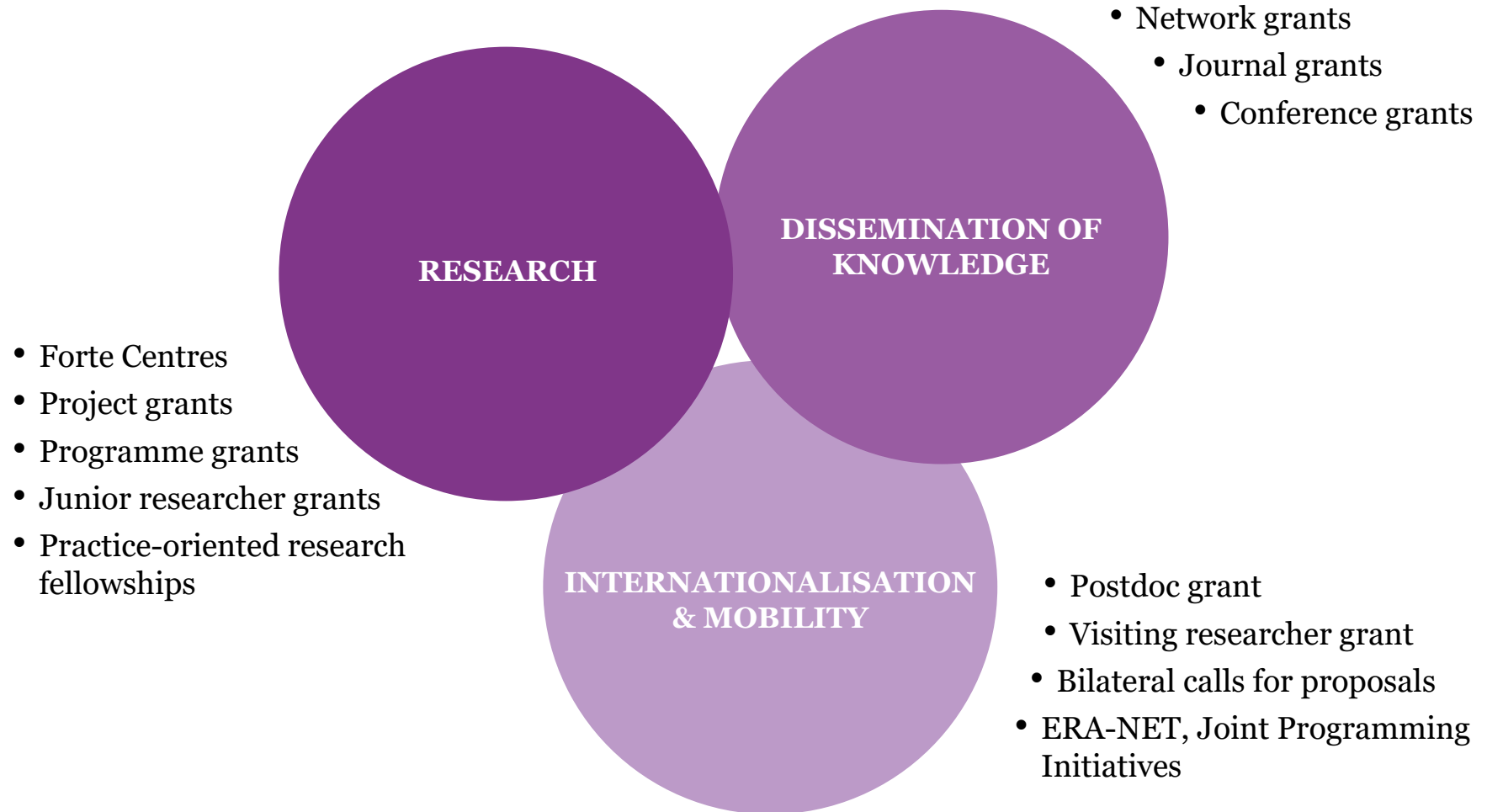
SEK **3,7** million was the average size of project grants

Decrease by SEK 116 000 since 2018

**1 675** applications were received and reviewed

Increase by 9 % since 2018

# Funding from Forte



# Different types of calls

## **Yearly calls that follow a recurrent cycle**

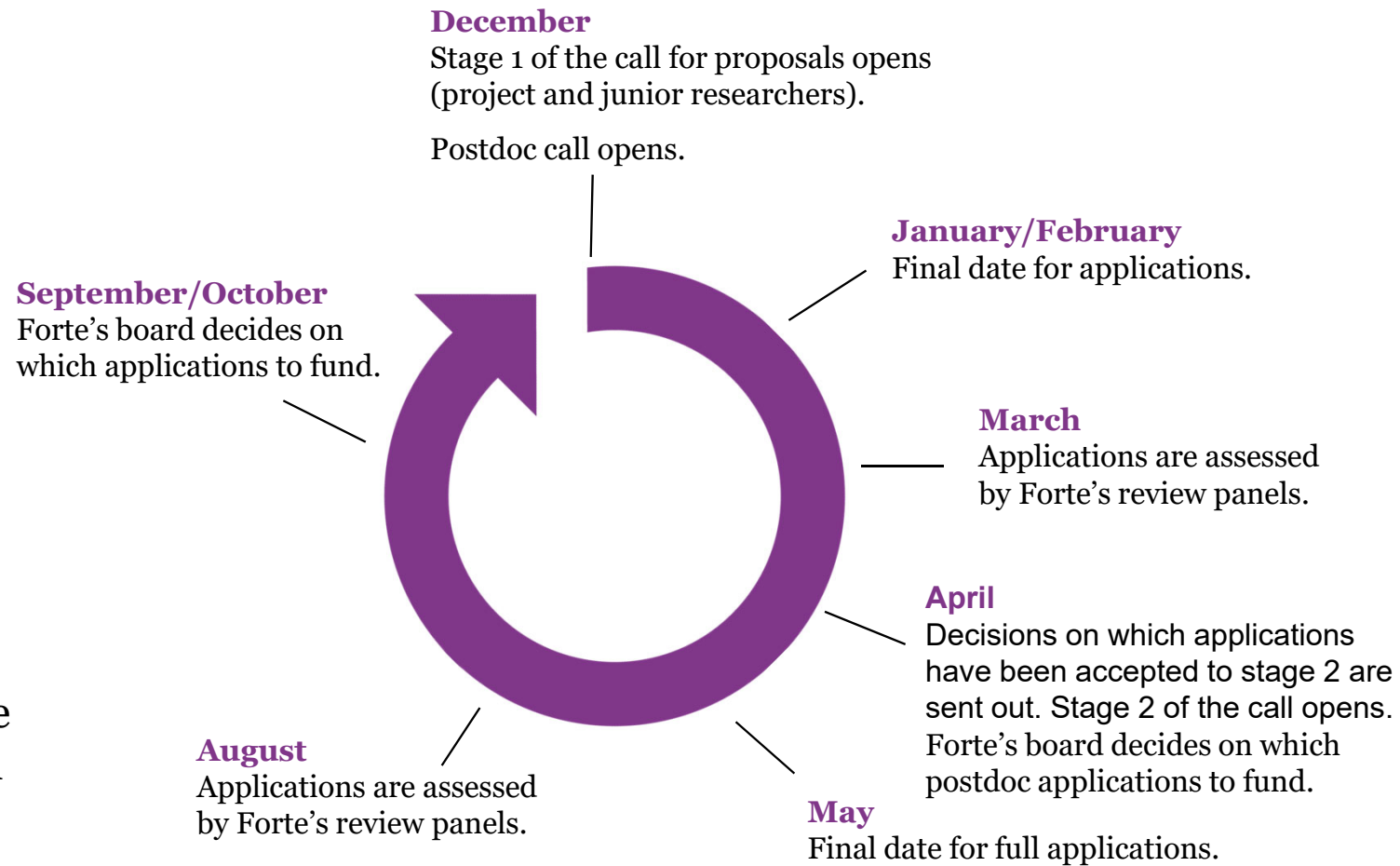
- Open for all research within Forte's areas of responsibility
- Permanent review panels

## **Thematic one-off calls**

- Open for research that address the questions identified in the call
- Temporary review panels

# Annual open call for proposals

- Welcomes all research within Forte's areas of responsibility
- Three grant types:
  - Project grant (3 years)
  - Junior researcher grant (4 years)
  - Postdoc grant (2 years)
- Two-stage application process
- Accounted for 43 % of the funds granted by Forte in 2019



# Assessment

## Review panels

- Leading researchers representing our areas of responsibility and community representatives to ensure public interest and social relevance

## Criteria

- Review panels make their assessment based on both the scientific quality of the applications and their societal relevance, as well as feasibility
- Specific criteria depend on the current call

# Review panels for the annual open call

## Health:

- Epidemiology and population-based studies
- Health promotion and behavior
- Health care and health care organisation

## Working life:

- Labour market
- Work organisation
- Work and work-related health

## Welfare:

- Social policy, social change and living conditions
- Social relations and social issues
- Social care and social work

## Health, working life and welfare

- Postdoc

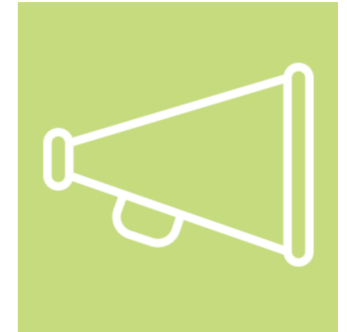
# OPEN AND FUTURE CALLS

# Future call International postdoc

- **Opens in October 28 2020, closes January 28 2021**
- **2 grant types:**
- Outgoing postdoc grants
- Incoming postdoc grants

## **Focus:**

The call is open to applications within Forte's overall areas of responsibility: health, working life and welfare





# Future call Annual open call 2021

- **Opens in early December 2020, closes in early February 2021**
- **3 grant types:**
  - Project grants 2-3 yrs
  - Junior researcher grants 4 yrs
  - Postdoc grants



## **Focus:**

The call is open to applications within Forte's overall areas of responsibility: health, working life and welfare

# Future call Applied welfare research

- **Opens in December 2020, closes in February 2021**
- **3 grant types:**
  - Programme grants 6 yrs
  - Project grants 3-4 yrs
  - International postdoc 2 yrs

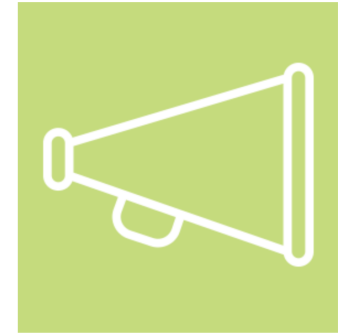
**Focus:**  
All prioritised areas (presented in the agenda)



# Future call Working life research

- **Opens in early 2021**
- **Grant types**
- To be announced

**Focus:**  
To be announced



**Stay updated**  
with our newsletter



Read more at **[forte.se/newsletter](https://forte.se/newsletter)**





# Thank you!

Inger Jonsson  
[Inger.jonsson@forte.se](mailto:Inger.jonsson@forte.se)